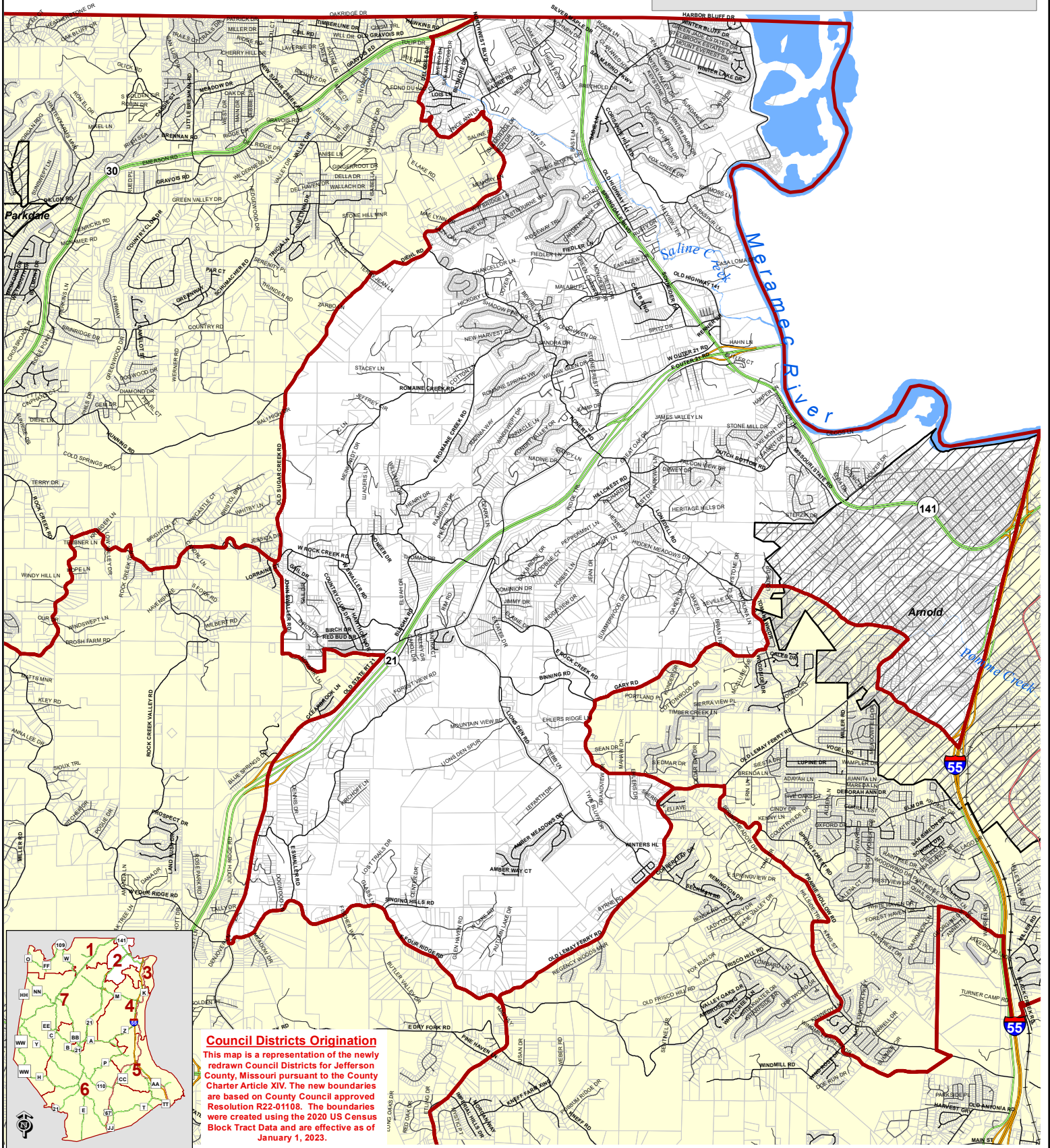


Jefferson County, Missouri Council District 2



Council Districts Origination
 This map is a representation of the newly redrawn Council Districts for Jefferson County, Missouri pursuant to the County Charter Article XIV. The new boundaries are based on County Council approved Resolution R22-01108. The boundaries were created using the 2020 US Census Block Tract Data and are effective as of January 1, 2023.



Jefferson County
 Department of the County Assessor
Bob Boyer, Assessor
 Print Date: **01/01/2023**
www.jeffcom.org/assessor
gjassessor@jeffcom.org
 636-797-5466

Caution
 This map is for tax purposes only. It is not intended nor sufficiently accurate to be used for conveyances. Any use other than for tax purposes shall be at the user's risk. The reproduction or copying of this map or any part thereof by any process is prohibited without the written permission of the Department of the County Assessor.

Pursuant to 2 CSR 90-65.080: "This Cadastral Map is for informational purposes only. It does not purport to represent a property boundary survey of the parcels shown and shall not be used for conveyances or the establishment of property boundaries."
 Authority: section 60.670, RSMo 2016.

Legend City Roads Local Roads County Roads Railroads Interstate State Route State Road US Hwy		Major Rivers/Creeks Municipalities Tax Parcels Jefferson County, Missouri, Council boundary
0 10 20 40 Miles		Coordinate System: NAD 1983 State Plane MO East FIPS 2401 US Foot Projection: Transverse Mercator

Data Source: Department of the County Assessor, Jefferson County 911 Division, East-West Gateway Council of Governments

